

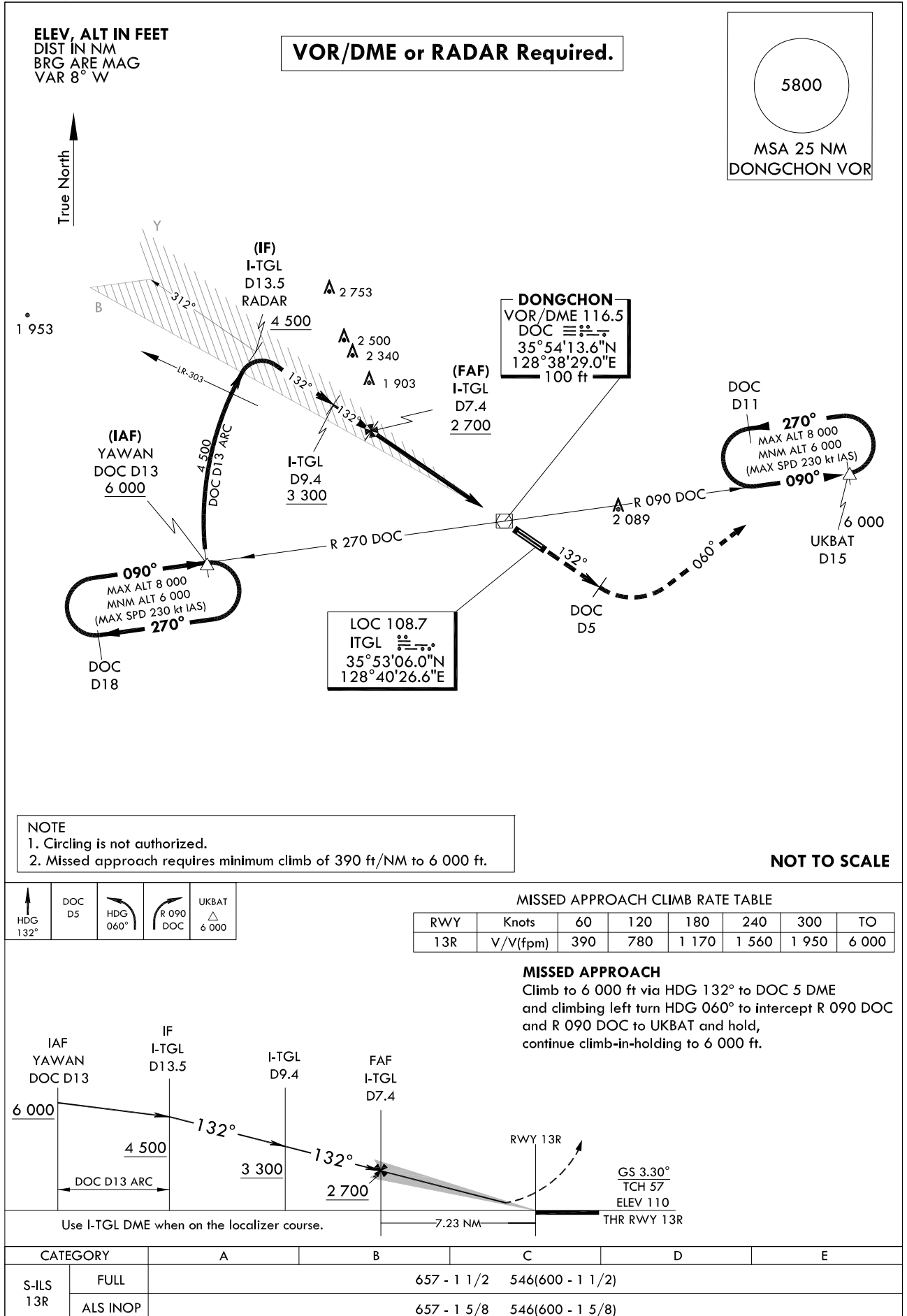
**INSTRUMENT
APPROACH
CHART**

AERODROME ELEV 120 ft
HEIGHTS RELATED TO
THR RWY 13R - ELEV 110 ft
HIGHEST ELEV TDZ 111 ft

DAEGU APP 135.9 346.3
DAEGU TWR 126.2 236.6
365.0

DAEGU/Daegu Intl(RKTN)
ILS
RWY 13R

Note : Approach and circle to land under U.S. TERPS.



Change : Page control.

INTENTIONALLY

LEFT

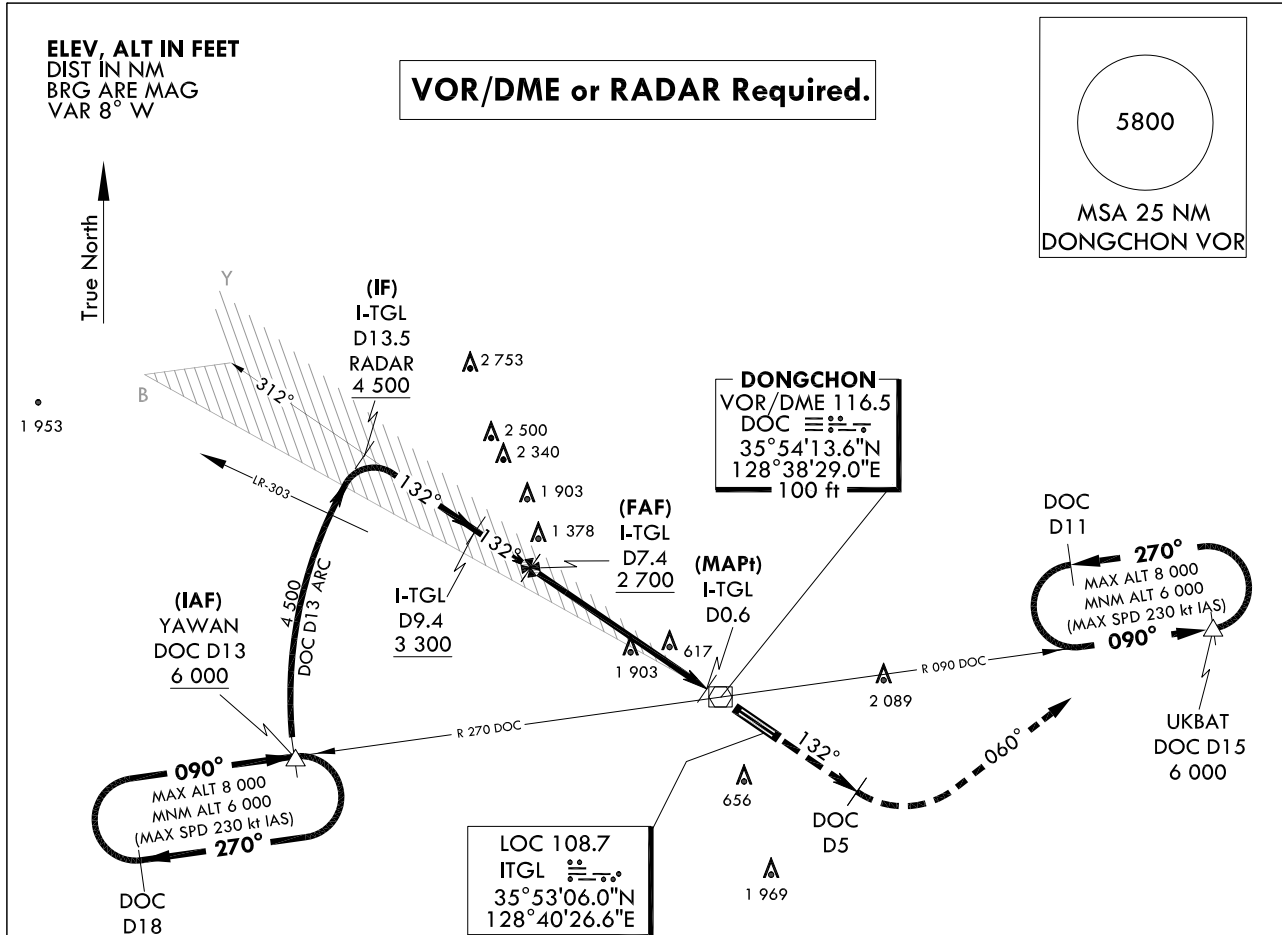
BLANK

AERODROME ELEV 120 ft
HEIGHTS RELATED TO
THR RWY 13R - ELEV **110 ft**
HIGHEST ELEV TDZ **111 ft**

DAEGU	APP	135.9	346.3
DAEGU	TWR	126.2	236.6
		365.0	

**DAEGU/Daegu Intl(RKTN)
LOC/DME
RWY 13R**

Note : Approach and circle to land under U.S. TERPS.






NOTE : 1 378 ft was not considered as final approach controlling OBST due to close to FAF.

NOTE

1. Circling is not authorized NE of RWY 13/31.
2. Missed approach requires minimum climb of 270 ft/NM to 6 000 ft.

NOT TO SCALE

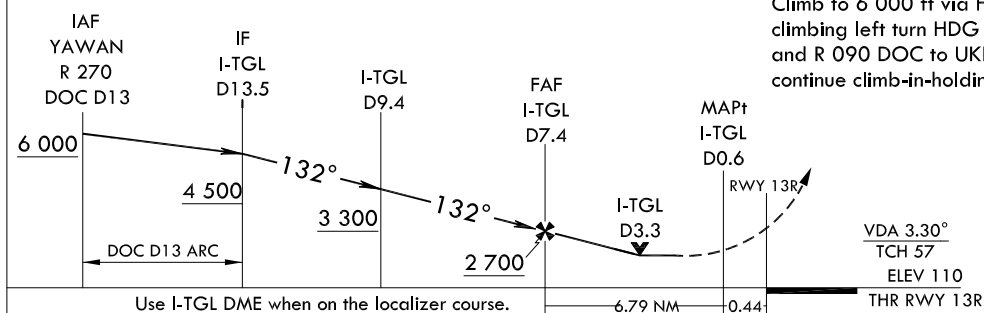
 HDG 132°	DOC D5	 HDG 060°	 R 090 DOC	UKBAT Δ 6 000
TRANSITION TRANSITION		ALT 14 000 LVL FL 140		

MISSED APPROACH CLIMB RATE TABLE

RWY	Knots	60	120	180	240	300	TO
13R	V/V(fpm)	270	530	790	1 050	1 310	6 000

MISSED APPROACH

Climb to 6 000 ft via HDG 132° to DOC 5 DME and climbing left turn HDG 060° to intercept R 090 DOC and R 090 DOC to UKBAT and hold, continue climb-in-holding to 6 000 ft.



CATEGORY		A	B	C	D	E
S-LOC 13R	FULL	1 260/55 1 149(1 200-1)	1 260/60 1 149(1 200-1 1/4)	1 260 - 3 1 149(1 200 - 3)		
	ALS INOP	1 260/60 1 149(1 200-1 1/4)	1 260 1 1/2 1 149(1 200-1 1/2)	1 260 - 3 1 149(1 200 - 3)		
CIRCLING		1 260 - 1 1/4 1 140(1 200 - 1 1/4)	1 260 - 1 1/2 1 140(1 200 - 1 1/2)	1 260 - 3 1 140(1 200 - 3)	1 300 - 3 1 180(1 200 - 3)	2 340 - 3 2 220(2 300 - 3)

Change : Page control.

INTENTIONALLY

LEFT

BLANK

**INSTRUMENT
APPROACH
CHART**

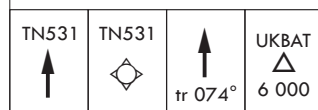
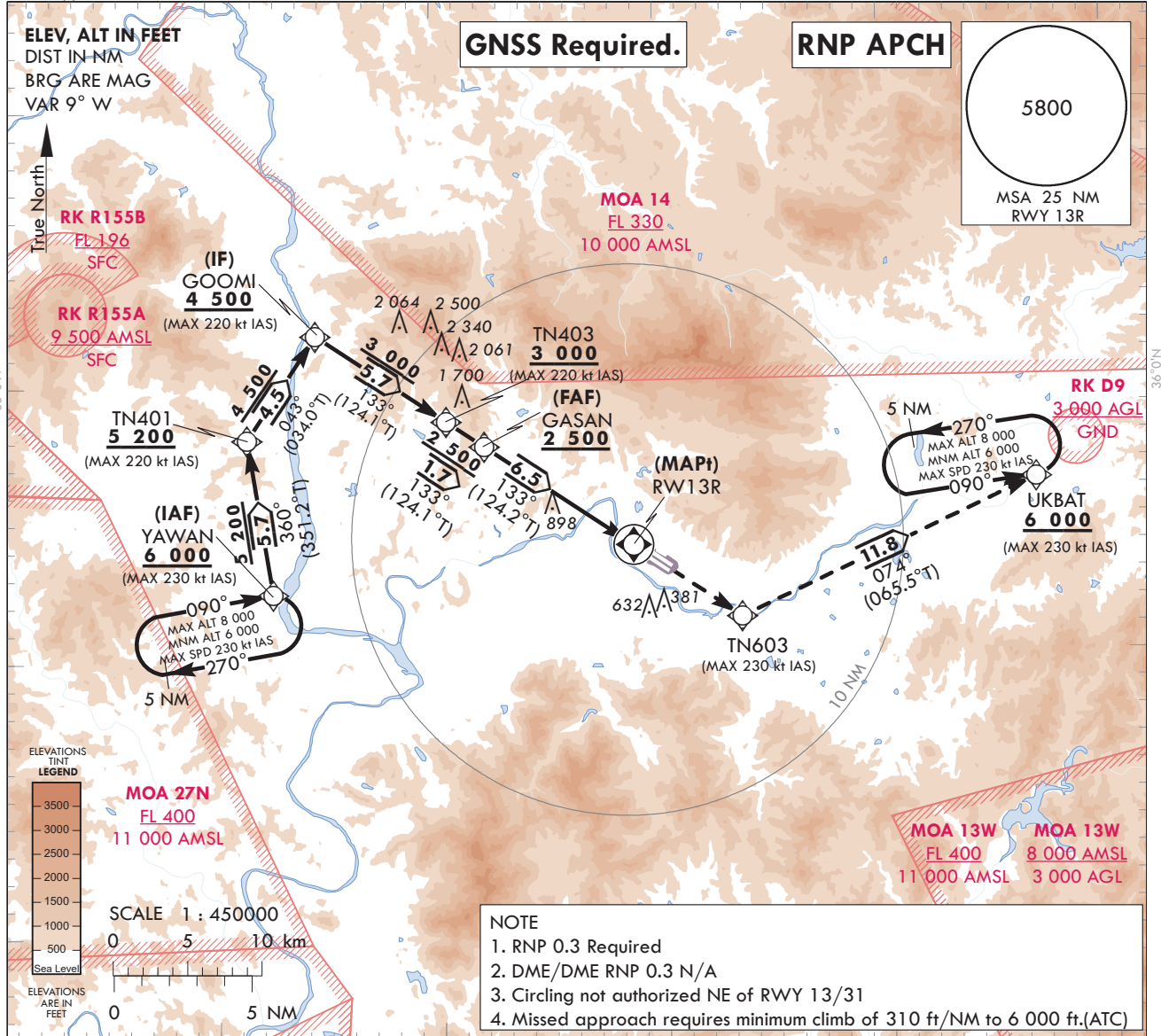
AERODROME ELEV 120 ft
HEIGHTS RELATED TO
THR RWY 13R - ELEV 110 ft
HEIGHTS ELEV TDZ 111 ft

DAEGU APP 135.9 346.3
DAEGU TWR 126.2 236.6
365.0

DAEGU/Daegu Intl(RKTN)

**RNP
RWY 13R**

Note : Approach and circle to land under U.S. TERPS.



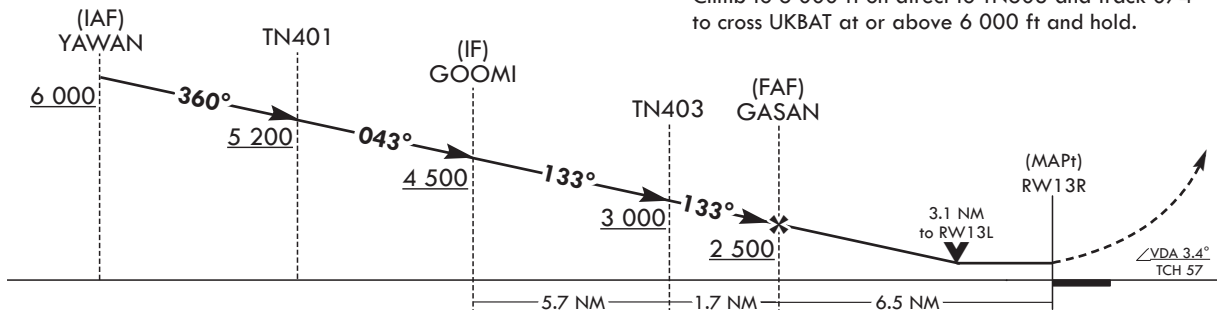
TRANSITION ALT 14 000
TRANSITION LVL FL 140

MISSED APPROACH CLIMB RATE TABLE

RWY	Knots	60	120	180	240	300	TO
13R	V/V(fpm)	310	620	930	1 240	1 550	6 000

MISSED APPROACH

Climb to 6 000 ft on direct to TN603 and track 074° to cross UKBAT at or above 6 000 ft and hold.



CATEGORY		A	B	C	D
LNAV/VNAV DA	ALS	N/A			
	ALS INOP	N/A			
LNAV MDA	ALS	1 260 - 3	1 149(1 200 - 3)		
	ALS INOP	1 260 - 3	1 149(1 200 - 3)		
CIRCLING		1 260 - 3	1 140(1 200 - 3)		

Change : Establishment of instrument approach procedure(RNP RWY 13R).

AERONAUTICAL DATA TABULATION

Instrument Approach Procedure Coding Tables

RNP RWY 13R

Serial Number	Path Descriptor	Waypoint Identifier	Fly-over	Course/Track °M(T)	Distance (NM)	Turn direction	Altitude (ft)	Speed (kt)	Coordinates	VPA/TCH	Navigation specification	Remarks
001	IF	YAWAN	-	-	-	-	+6 000	-230	35°52'24.8"N 128°22'38.0"E	-	RNP APCH	IAF
002	TF	TN401	-	360(351.2)	5.7	-	+5 200	-220	35°58'02.1"N 128°21'34.0"E	-	RNP APCH	-
003	TF	GOOWI	-	043(034.0)	4.5	-	+4 500	-220	36°01'47.4"N 128°24'41.4"E	-	RNP APCH	IF
004	TF	TN403	-	133(124.1)	5.7	-	+3 000	-220	35°58'36.2"N 128°30'28.8"E	-	RNP APCH	-
005	TF	GASAN	-	133(124.1)	1.7	-	+2 500	-	35°57'40.4"N 128°32'10.1"E	-	RNP APCH	FAF
006	TF	RW13R	Y	133(124.2)	6.5	-	-	-230	35°54'02.2"N 128°38'45.1"E	-	RNP APCH	MAPt
007	DF	TN603	-	-	-	-	-	-230	35°51'22.9"N 128°43'32.6"E	-	RNP APCH	CG310 ft/NM to 6 000
008	TF	UKBAT	-	074(065.5)	11.8	-	+6 000	-230	35°56'16.5"N 128°56'47.1"E	-	RNP APCH	-
009	HM	UKBAT	-	090(081.3)	-	L	-8 000 +6 000	-230	35°56'16.5"N 128°56'47.1"E	-	RNP APCH	5 NM (Outbound timing)

HOLDING PROCEDURE

Holding Identification	Path Descriptor	Waypoint Identifier	Fly-over	Course/Track °M(T)	Distance (NM)	Turn direction	Altitude (ft)	Speed (kt)	Coordinates	VPA/TCH	Navigation specification	Remarks
RNP RWY 13R	HM	YAWAN	-	090(081.3)	5.0	R	-8 000 +6 000	-230	35°02'09.4"N 127°44'21.6"E	-	RNAV 1	-

**INSTRUMENT
APPROACH
CHART**

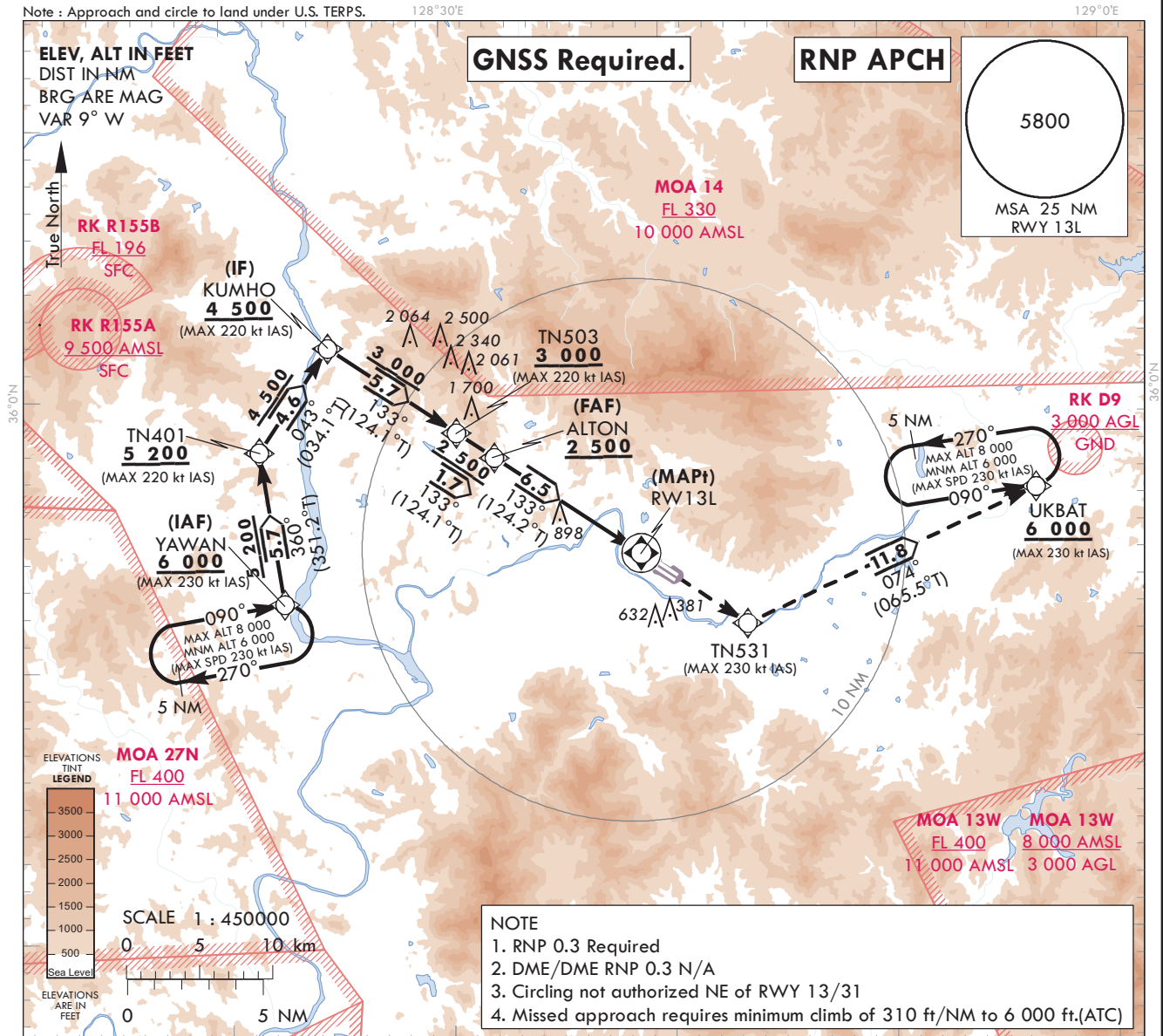
AERODROME ELEV 120 ft
HEIGHTS RELATED TO
THR RWY 13L - ELEV 112 ft
HEIGHTS ELEV TDZ 112 ft

DAEGU APP 135.9 346.3
DAEGU TWR 126.2 236.6
365.0

DAEGU/Daegu Intl(RKTN)

**RNP
RWY 13L**

Note : Approach and circle to land under U.S. TERPS.



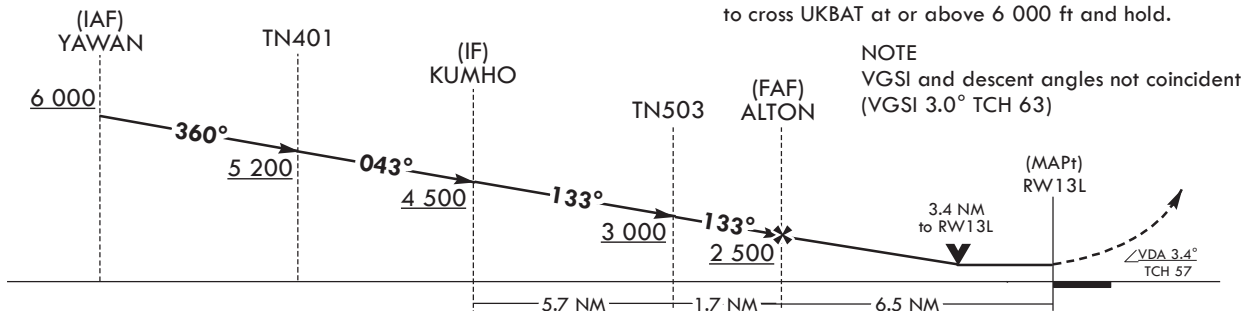
TN531	TN531	↑	UKBAT	↑	tr 074°	6 000
↑	↑	↑	↑	↑	↑	↑

MISSED APPROACH CLIMB RATE TABLE

RWY	Knots	60	120	180	240	300	TO
13L	V/V(fpm)	310	620	930	1 240	1 550	6 000

MISSED APPROACH

Climb to 6 000 ft on direct to TN531 and track 074° to cross UKBAT at or above 6 000 ft and hold.



CATEGORY		A	B	C	D
LNAV/VNAV DA	ALS				N/A
	ALS INOP				N/A
LNAV MDA	ALS		1 260 - 3	1 148(1 200 - 3)	
	ALS INOP		1 260 - 3	1 148(1 200 - 3)	
CIRCLING			1 260 - 3	1 140(1 200 - 3)	

Change : Establishment of instrument approach procedure(RNP RWY 13L).

AERONAUTICAL DATA TABULATION

Instrument Approach Procedure Coding Tables

RNP RWY 13L										
Serial Number	Path Descriptor	Waypoint Identifier	Fly-over	Course/Track °M(°T)	Distance (NM)	Turn direction	Altitude (ft)	Speed (kt)	Coordinates	VPA/TCH
001	IF	YAWAN	-	-	-	-	+6 000	-230	35°52'24.8"N 128°22'38.0"E	-
002	TF	TN401	-	360(351.2)	5.7	-	+5 200	-220	35°58'02.1"N 128°21'34.0"E	-
003	TF	KUMHO	-	043(034.1)	4.6	-	+4 500	-220	36°01'50.8"N 128°24'44.3"E	-
004	TF	TN503	-	133(124.1)	5.7	-	+3 000	-220	35°58'39.4"N 128°30'32.1"E	-
005	TF	ALTON	-	133(124.1)	1.7	-	+2 500	-	35°57'43.3"N 128°32'13.8"E	-
006	TF	RW13L	Y	133(124.2)	6.5	-	-	-230	35°54'05.4"N 128°38'48.4"E	-
007	DF	TN531	-	-	-	-	-	-230	35°51'26.2"N 128°43'35.7"E	-
008	TF	UKBAT	-	074(065.5)	11.8	-	+6 000	-230	35°56'16.5"N 128°56'47.1"E	-
009	HM	UKBAT	-	090(081.3)	-	L	+8 000 +6 000	-230	35°56'16.5"N 128°56'47.1"E	-
Remarks										
IAF										
IF										
FAF										
MAPt										
CG310 ft/NM to 6 000										
5 NM (Outbound timing)										

HOLDING PROCEDURE						
Holding Identification	Path Descriptor	Waypoint Identifier	Fly-over	Course/Track °M(°T)	Distance (NM)	Turn direction
RNP RWY 13L	HM	YAWAN	-	090(081.3)	5.0	R
Remarks						
RNAV 1						

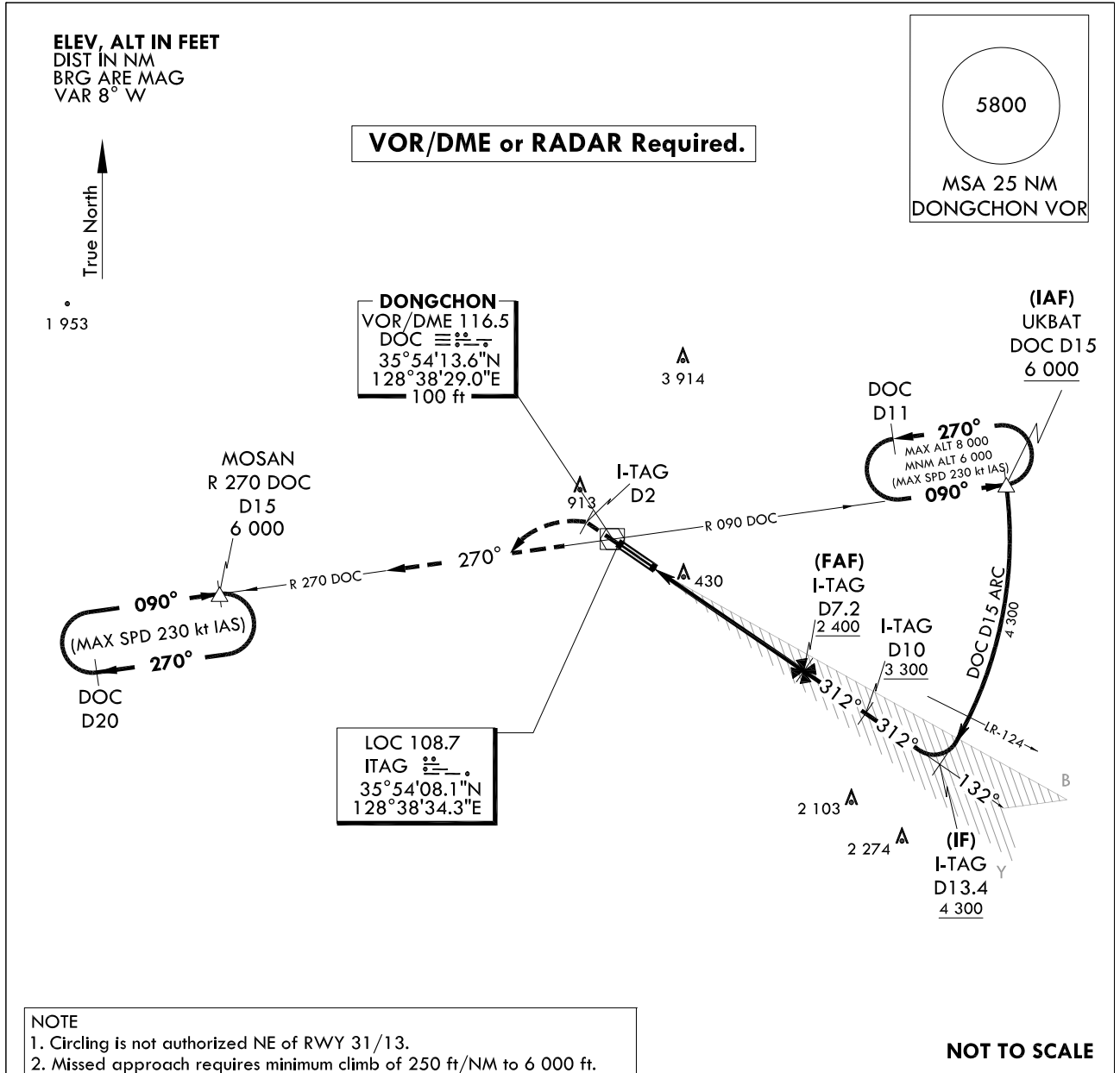
**INSTRUMENT
APPROACH
CHART**

AERODROME ELEV 120 ft
HEIGHTS RELATED TO
THR RWY 31L - ELEV 118 ft
HIGHEST ELEV TDZ 118 ft

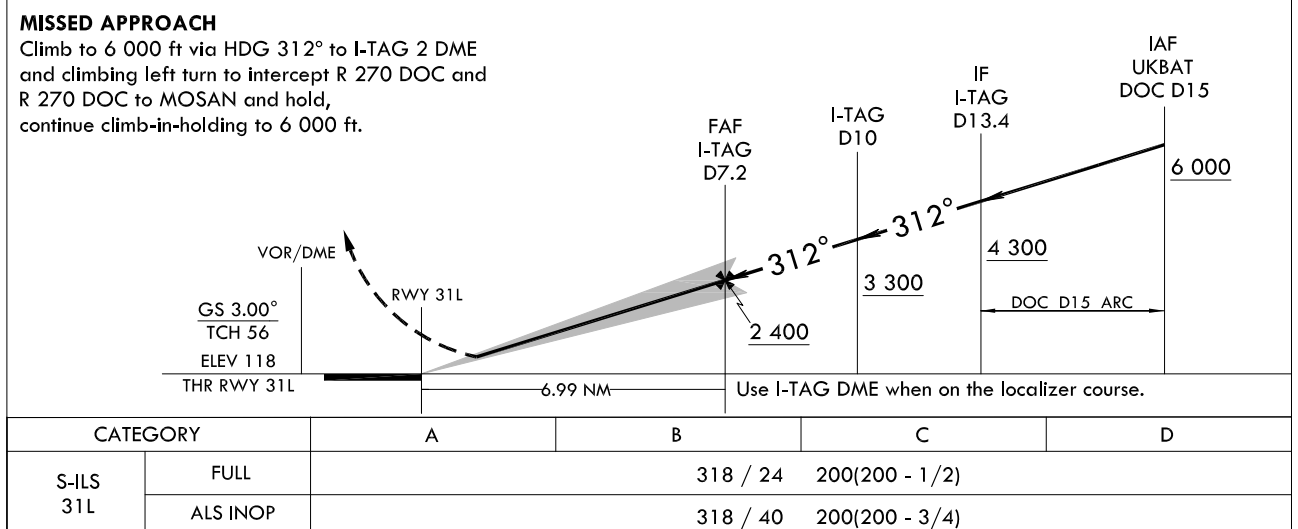
DAEGU APP 135.9 346.3
DAEGU TWR 126.2 236.6
365.0

DAEGU/Daegu Intl(RKTN)
ILS
RWY 31L

Note : Approach and circle to land under U.S. TERPS.



HDG	I-TAG	R 270	MOSAN	TRANSITION	ALT	TRANSITION	ALT
312°	D2	DOC	6 000	LVL	FL 140	LVL	FL 140



Change : Page control.

INTENTIONALLY

LEFT

BLANK

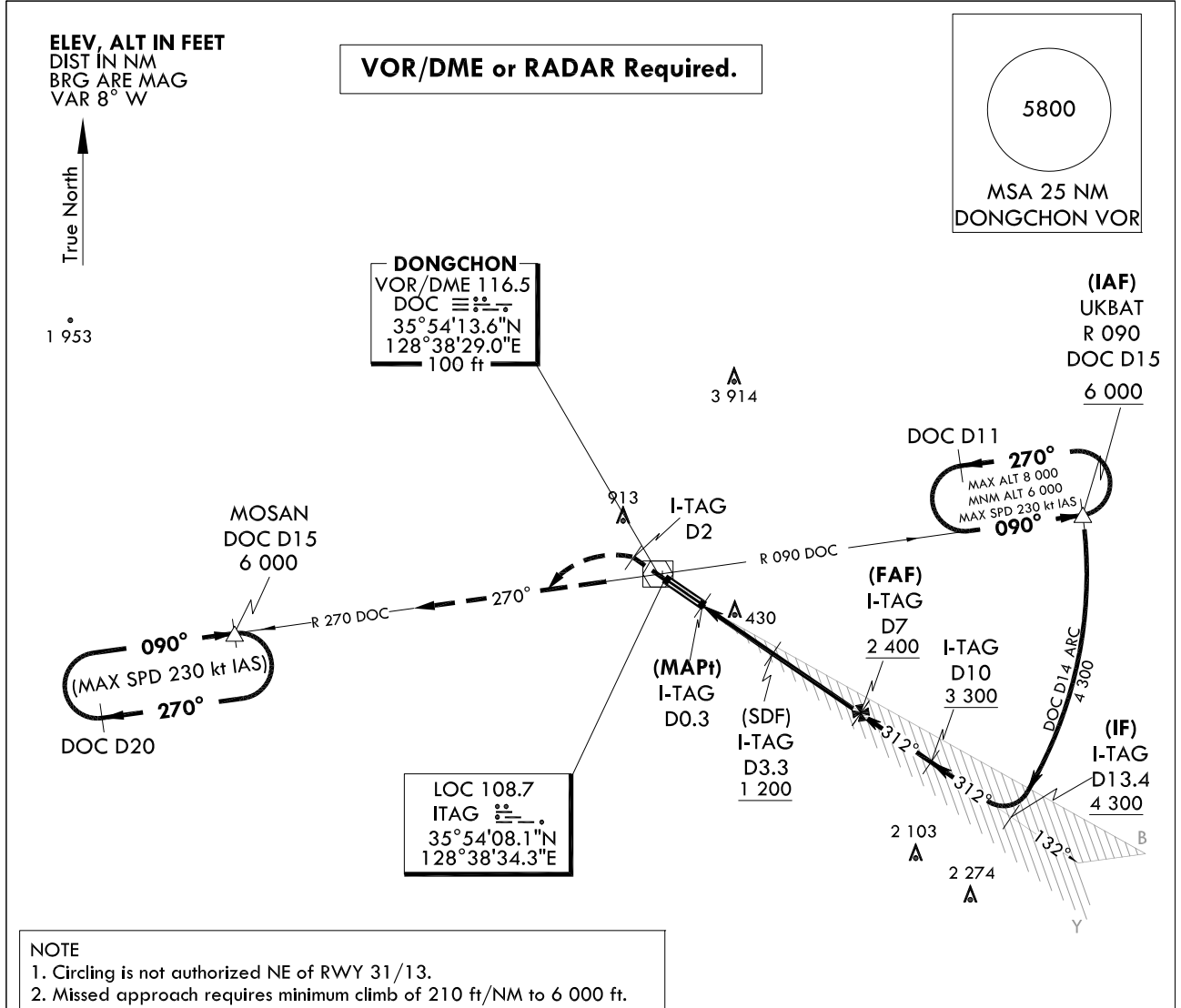
**INSTRUMENT
APPROACH
CHART**

AERODROME ELEV 120 ft
HEIGHTS RELATED TO
THR RWY 31L - ELEV 118 ft
HIGHEST ELEV TDZ 118 ft

DAEGU APP 135.9 346.3
DAEGU TWR 126.2 236.6
365.0

DAEGU/Daegu Intl(RKTN)
LOC/DME
RWY 31L

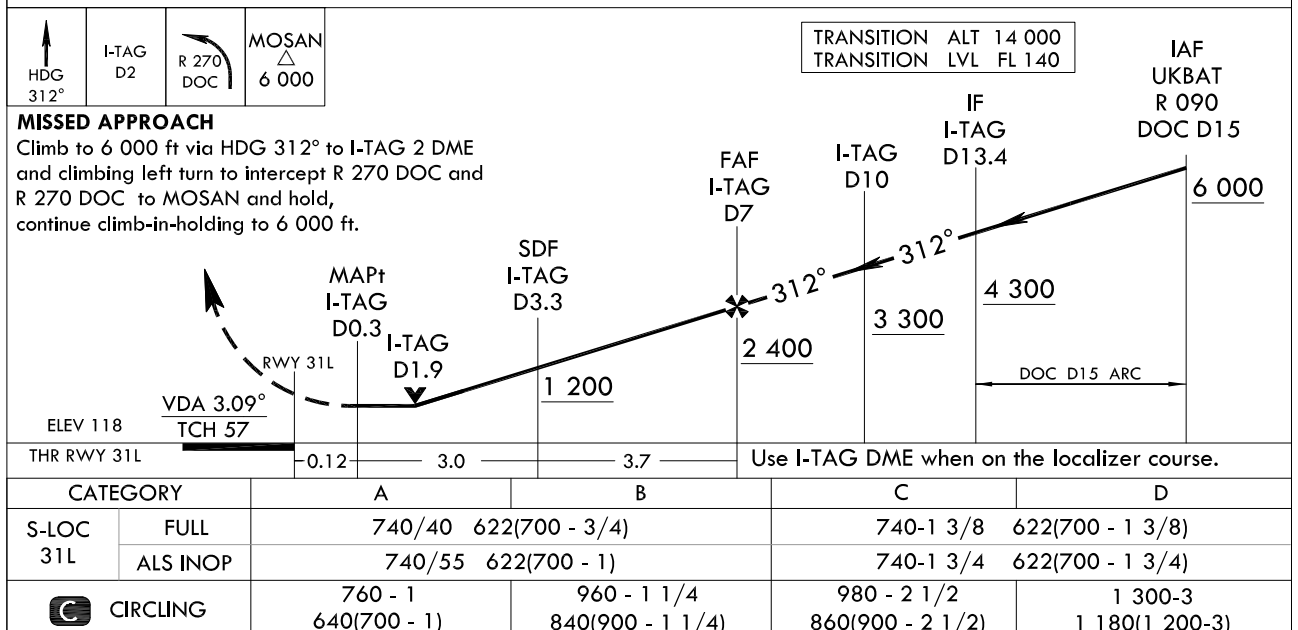
Note : Approach and circle to land under U.S. TERPS.



NOT TO SCALE

MISSED APPROACH CLIMB RATE TABLE

RWY	Knots	60	120	180	240	To
31L	V/V(fpm)	210	420	630	840	6 000



Change : Page control.

INTENTIONALLY

LEFT

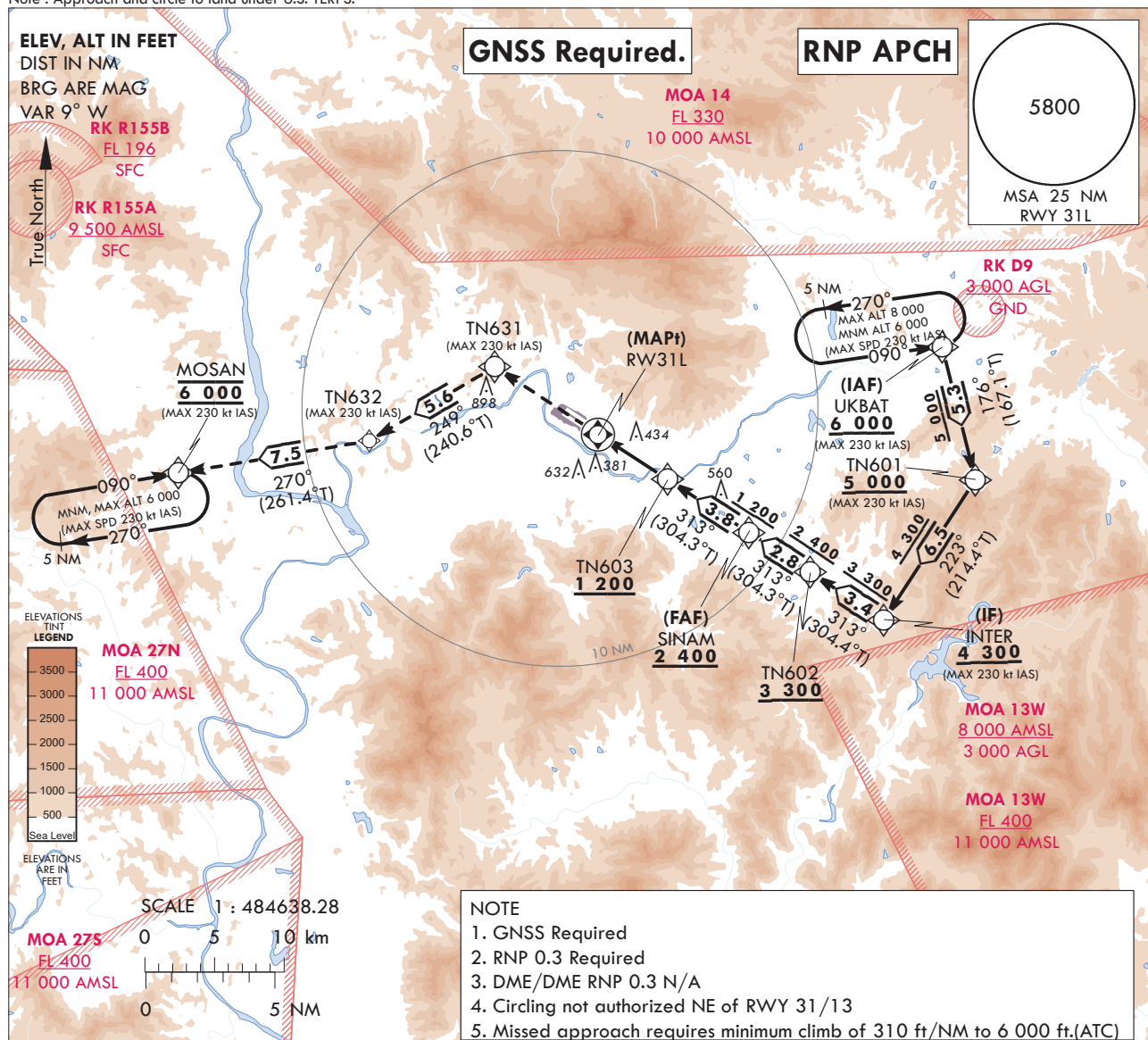
BLANK

AERODROME ELEV 120ft
HEIGHTS RELATED TO
THR RWY 31L - ELEV **118 ft**
HEIGHTS ELEV TDZ **118 ft**

DAEGU	APP	135.9	346.3
DAEGU	TWR	126.2	236.6
		365.0	

DAEGU/Daegu Intl(RKTN)
RNP
RWY 31L

Note : Approach and circle to land under U.S. TERPS.

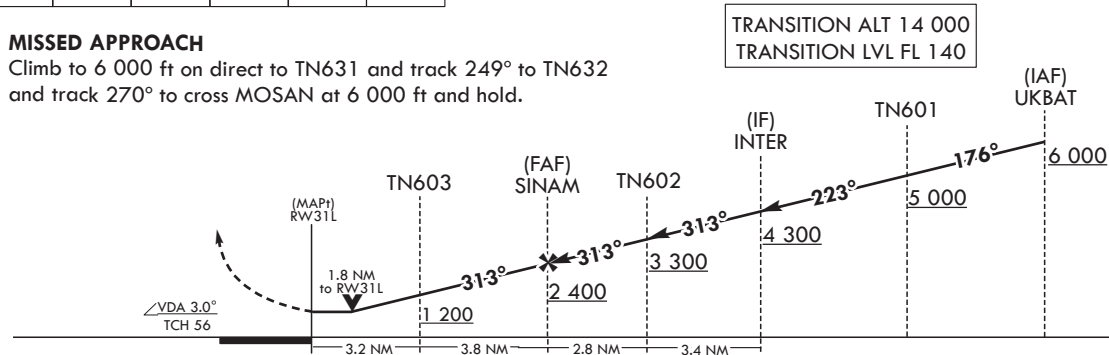


TN631 ↑	TN631 ⬤	↑ tr 249°	TN632 ⬤	6000 ↑ tr 270°	MOSAN △ <hr/> 6 000
------------	------------	--------------	------------	----------------------	---------------------------

MISSED APPROACH CLIMB RATE TABLE							
RWY	KNOTS	60	120	180	240	300	TO
31L	V/V(fpm)	310	620	930	1 240	1 550	6 000

MISSED APPROACH

Climb to 6 000 ft on direct to TN631 and track 249° to TN632 and track 270° to cross MOSAN at 6 000 ft and hold.



CATEGORY		A	B	C	D
LNAV/ VNAV DA	ALS	N/A			
	ALS INOP	N/A			
LNAV MDA	ALS	760-1 3/8 642(700-1 3/8)			
	ALS INOP	760-1 7/8 642(700-1 7/8)			
CIRCLING		760-1 7/8 640(700-1 7/8)	1 000-1 7/8 880(900-1 7/8)	1 000-2 1/2 880(900-2 1/2)	1 260-3 1 140(1 200-3)

Change : Establishment of instrument approach procedure(RNP RWY 31L).

AERONAUTICAL DATA TABULATION

Instrument Approach Procedure Coding Tables

RNP RWY 31L												
Serial Number	Path Descriptor	Waypoint Identifier	Fly-over	Course/Track M(°T)	Distance (NM)	Turn direction	Altitude (ft)	Speed (kt)	Coordinates	VPA/ TCH	Navigation specification	Remarks
001	IF	UKBAT	-	-	-	-	+6 000	-230	35°56'16.5"N 128°56'47.1"E	-	RNP APCH	IAF
002	TF	TN601	-	176(167.1)	5.3	-	+5 000	-230	35°51'06.5"N 128°58'12.6"E	-	RNP APCH	-
003	TF	INTER	-	223(214.4)	6.5	-	+4 300	-230	35°45'44.2"N 128°53'41.8"E	-	RNP APCH	IF
004	TF	TN602	-	313(304.3)	3.4	-	+3 300	-230	35°47'39.4"N 128°50'14.8"E	-	RNP APCH	-
005	TF	SNAM	-	313(304.3)	2.8	-	+2 400	-230	35°49'15.4"N 128°47'22.3"E	-	RNP APCH	FAF
006	TF	TN603	-	313(304.3)	3.8	-	+1 200	-	35°51'22.9"N 128°43'32.6"E	-	RNP APCH	-
007	TF	RW31L	Y	313(304.3)	3.2	-	-	-	35°53'11.9"N 128°40'15.9"E	-	RNP APCH	MAPt
008	DF	TN631	-	-	-	-	-	-230	35°55'53.2"N 128°35'24.2"E	-	RNP APCH	CG310 ft/NM to 6 000
009	TF	TN632	-	249(240.6)	5.6	-	-	-230	35°53'06.4"N 128°29'21.3"E	-	RNP APCH	-
010	TF	MOSAN	-	270(261.4)	7.5	-	@6 000	-230	35°51'58.4"N 128°20'14.0"E	-	RNP APCH	-
011	HM	MOSAN	-	090(081.3)	-	R	@6 000	-230	35°51'58.4"N 128°20'14.0"E	-	RNP APCH	5 NM (Outbound timing)

HOLDING PROCEDURE

Holding Identification	Path Descriptor	Waypoint Identifier	Fly-over	Course/Track M(°T)	Distance (NM)	Turn direction	Altitude (ft)	Speed (kt)	Coordinates	VPA/ TCH	Navigation specification	Remarks
RNP RWY 31L	HM	UKBAT	-	090(081.3)	5.0	L	-8 000 +8 000	-230	35°56'16.5"N 128°56'47.1"E	-	RNAV 1	-

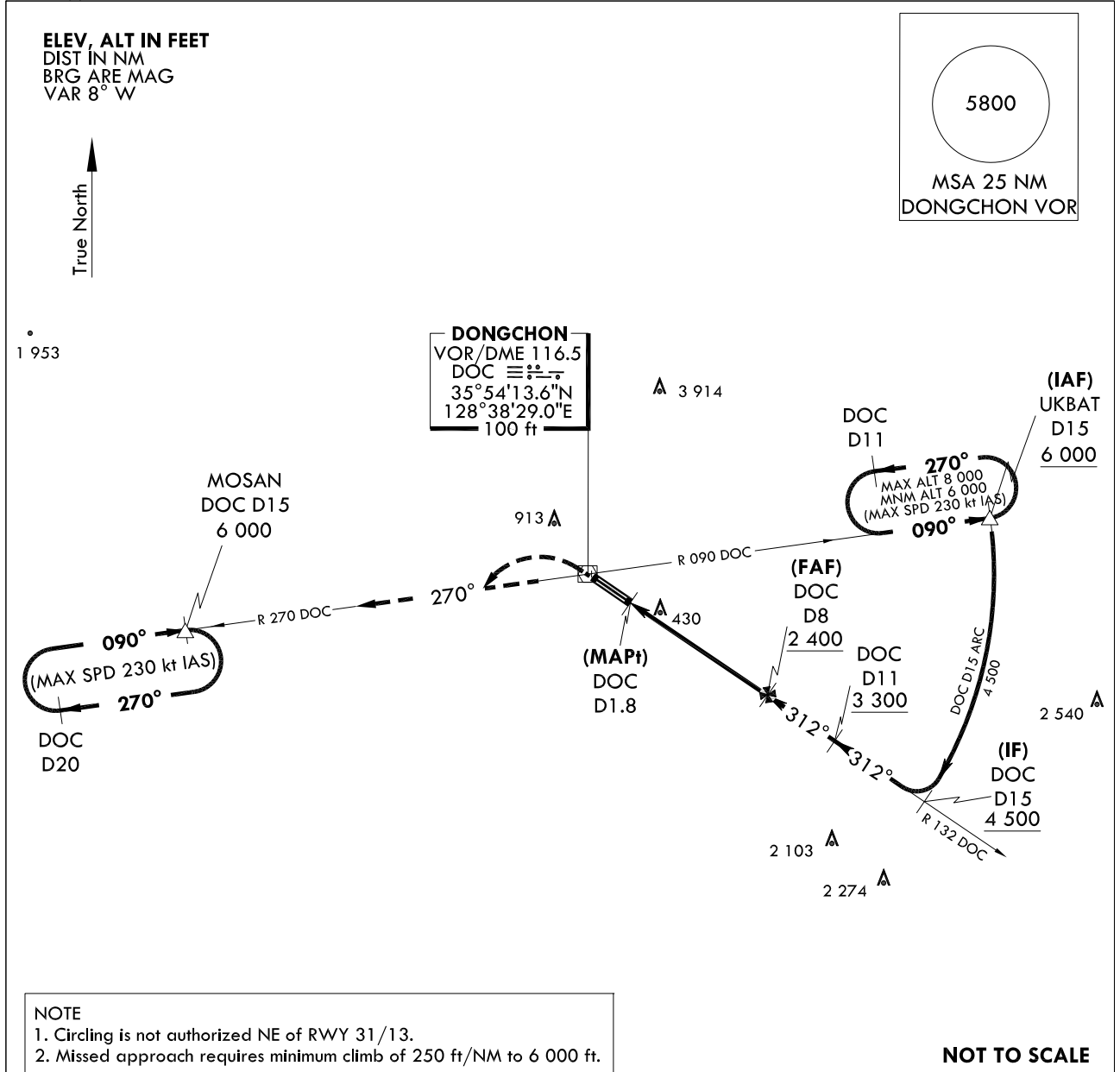
**INSTRUMENT
APPROACH
CHART**

AERODROME ELEV 120 ft
HEIGHTS RELATED TO
THR RWY 31L - ELEV 118 ft
HIGHEST ELEV TDZ 118 ft

DAEGU APP 135.9 346.3
DAEGU TWR 126.2 236.6
365.0

**DAEGU/Daegu Intl(RKTN)
VOR/DME
RWY 31L**

Note : Approach and circle to land under U.S. TERPS.

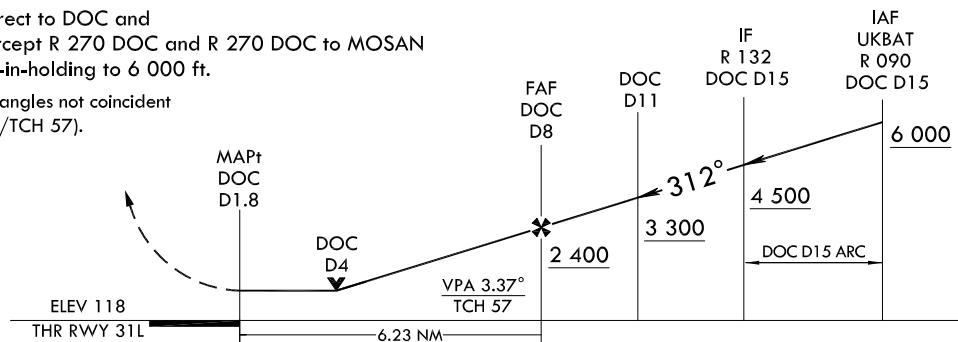


RWY	Knots	60	120	180	240	300	TO
31L	V/V(fpm)	250	470	700	930	1 160	6 000

MISSED APPROACH

Climb to 6 000 ft via direct to DOC and climbing left turn to intercept R 270 DOC and R 270 DOC to MOSAN and hold, continue climb-in-holding to 6 000 ft.

NOTE : VGSI and descent angles not coincident
(VGSI Angle 3.00°/TCH 57).



CATEGORY	A	B	C	D
S-VOR 31L	FULL 880/40 762(800 - 3/4)		880-1 3/4 762(800-1 3/4)	
	ALS INOP 880/55 762(800 - 1)		880-2 1/2 762(800-2 1/2)	
CIRCLING	880 - 1 760(800 - 1)	960 - 1 1/4 840(900 - 1 1/4)	980 - 2 1/2 860(900 - 2 1/2)	1 300-3 1 180(1 200-3)

Change : Page control.

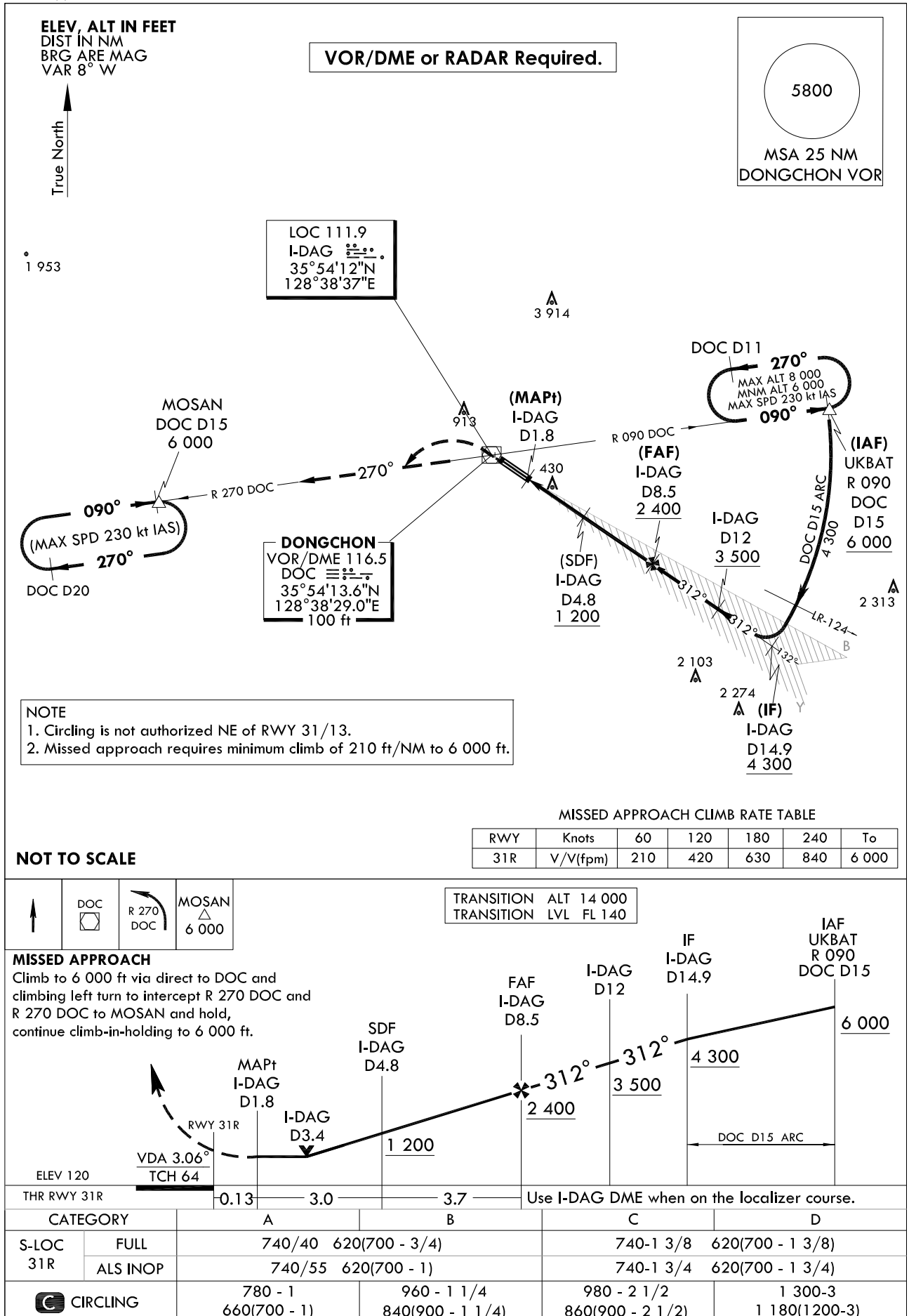
INTENTIONALLY

LEFT

BLANK

INSTRUMENT
APPROACH
CHARTAERODROME ELEV 120 ft
HEIGHTS RELATED TO
THR RWY 31R - ELEV 120 ft
HIGHEST ELEV TDZ 120 ftDAEGU APP 135.9 346.3
DAEGU TWR 126.2 236.6
365.0DAEGU/Daegu Intl(RKTN)
LOC/DME
RWY 31R

Note : Approach and circle to land under U.S. TERPS.



Change : Page control.

INTENTIONALLY

LEFT

BLANK

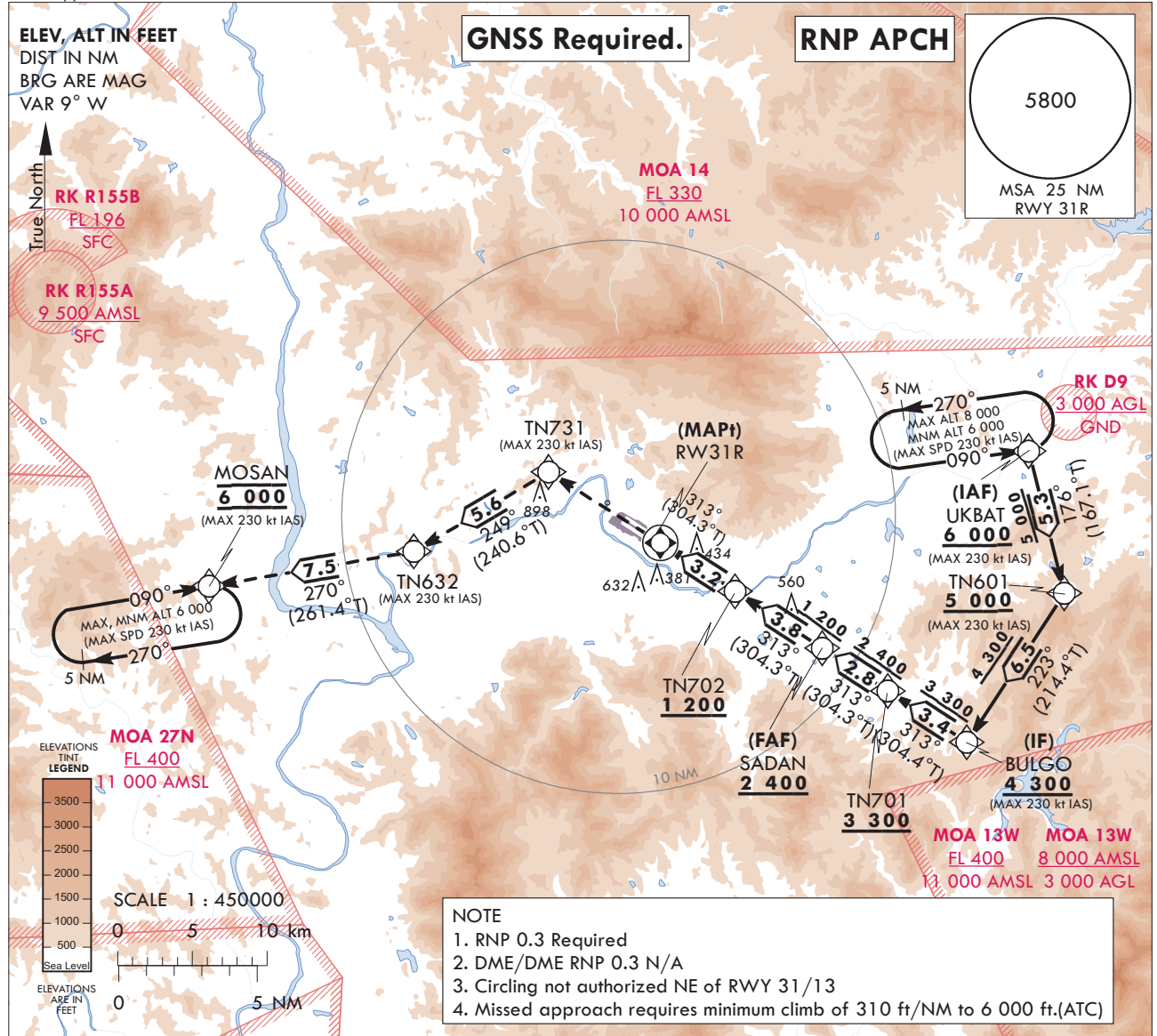
**INSTRUMENT
APPROACH
CHART**

AERODROME ELEV 120 ft
HEIGHTS RELATED TO
THR RWY 31R - ELEV 120 ft
HEIGHTS ELEV TDZ 120 ft

DAEGU APP 135.9 346.3
DAEGU TWR 126.2 236.6
365.0

DAEGU/Daegu Intl(RKTN)
RNP
RWY 31R

Note : Approach and circle to land under U.S. TERPS.



TN731	TN731	↑	TN632	6000	MOSAN
↑	◇	tr 249°	◇	↑	△
				tr 270°	6 000

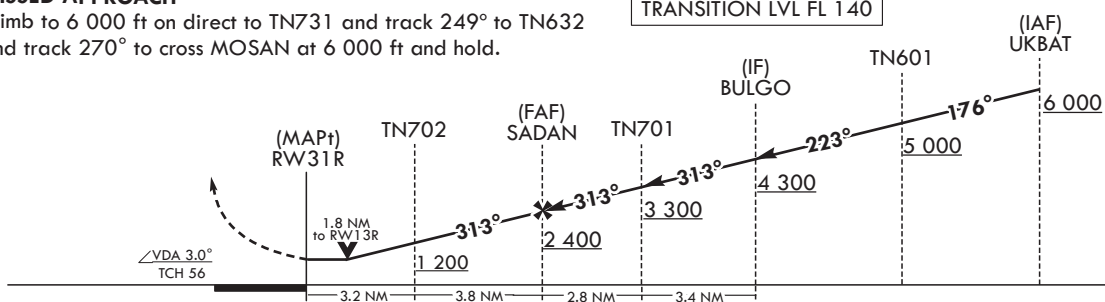
MISSED APPROACH CLIMB RATE TABLE

RWY	KNOTS	60	120	180	240	300	TO
31R	V/V(fpm)	310	620	930	1 240	1 550	6 000

MISSED APPROACH

Climb to 6 000 ft on direct to TN731 and track 249° to TN632 and track 270° to cross MOSAN at 6 000 ft and hold.

TRANSITION ALT 14 000
TRANSITION LVL FL 140



CATEGORY		A	B	C	D
LNAV/VNAV DA	ALS	N/A			
	ALS INOP	N/A			
LNAV MDA	ALS	760-1 3/8 640(700-1 3/8)			
	ALS INOP	760-1 3/4 640(700-1 3/4)			
CIRCLING		760-1 3/4 640(700-1 3/4)	1 000-1 3/4 880(900-1 3/4)	1 000-2 1/2 880(900-2 1/2)	1 260-3 1 140(1 200-3)

Change : Establishment of instrument approach procedure(RNP RWY 31R).

AERONAUTICAL DATA TABULATION

Instrument Approach Procedure Coding Tables

RNP RWY 31R											
Serial Number	Path Descriptor	Waypoint Identifier	Course/ Flt- °M(°T) over	Distance (NM)	Turn direction	Altitude (ft)	Speed (kt)	Coordinates	VPA/ TCH	Navigation specification	Remarks
001	IF	UKBAT	-	-	-	+6 000	-230	35°56'16.5"N 128°56'47.1"E	-	RNP APCH	IAF
002	TF	TN601	-	176(167.1)	-	+5 000	-230	35°51'06.5"N 128°58'12.6"E	-	RNP APCH	-
003	TF	BULGO	-	223(214.4)	-	+4 300	-230	35°45'47.6"N 128°53'44.7"E	-	RNP APCH	IF
004	TF	TN701	-	313(304.4)	-	+3 300	-230	35°47'42.9"N 128°50'17.7"E	-	RNP APCH	-
005	TF	SADAN	-	313(304.3)	-	+2 400	-230	35°49'18.8"N 128°47'25.2"E	-	RNP APCH	FAF
006	TF	TN702	-	313(304.3)	-	+1 200	-	35°51'26.4"N 128°43'35.4"E	-	RNP APCH	-
007	TF	RW31R	Y	313(304.3)	-	-	-	35°53'15.3"N 128°40'18.8"E	-	RNP APCH	MAPt
008	DF	TN731	-	-	-	-	-230	35°55'53.2"N 128°35'24.2"E	-	RNP APCH	CG310H/NW to 6 000
009	TF	TN632	-	249(240.6)	-	-	-230	35°53'06.4"N 128°29'21.3"E	-	RNP APCH	-
010	TF	MOSAN	-	270(261.4)	-	@6 000	-230	35°51'58.4"N 128°20'14.0"E	-	RNP APCH	-
011	HW	MOSAN	-	090(081.3)	R	@6 000	-230	35°51'58.4"N 128°20'14.0"E	-	RNP APCH	5 NM (Outbound timing)

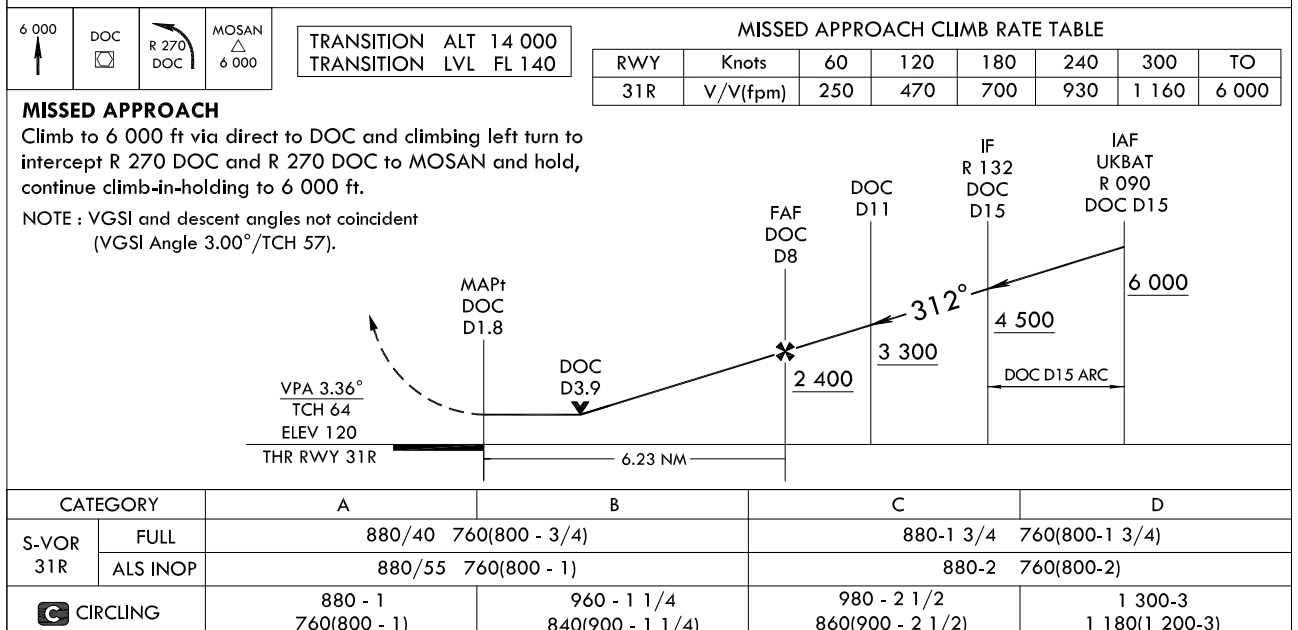
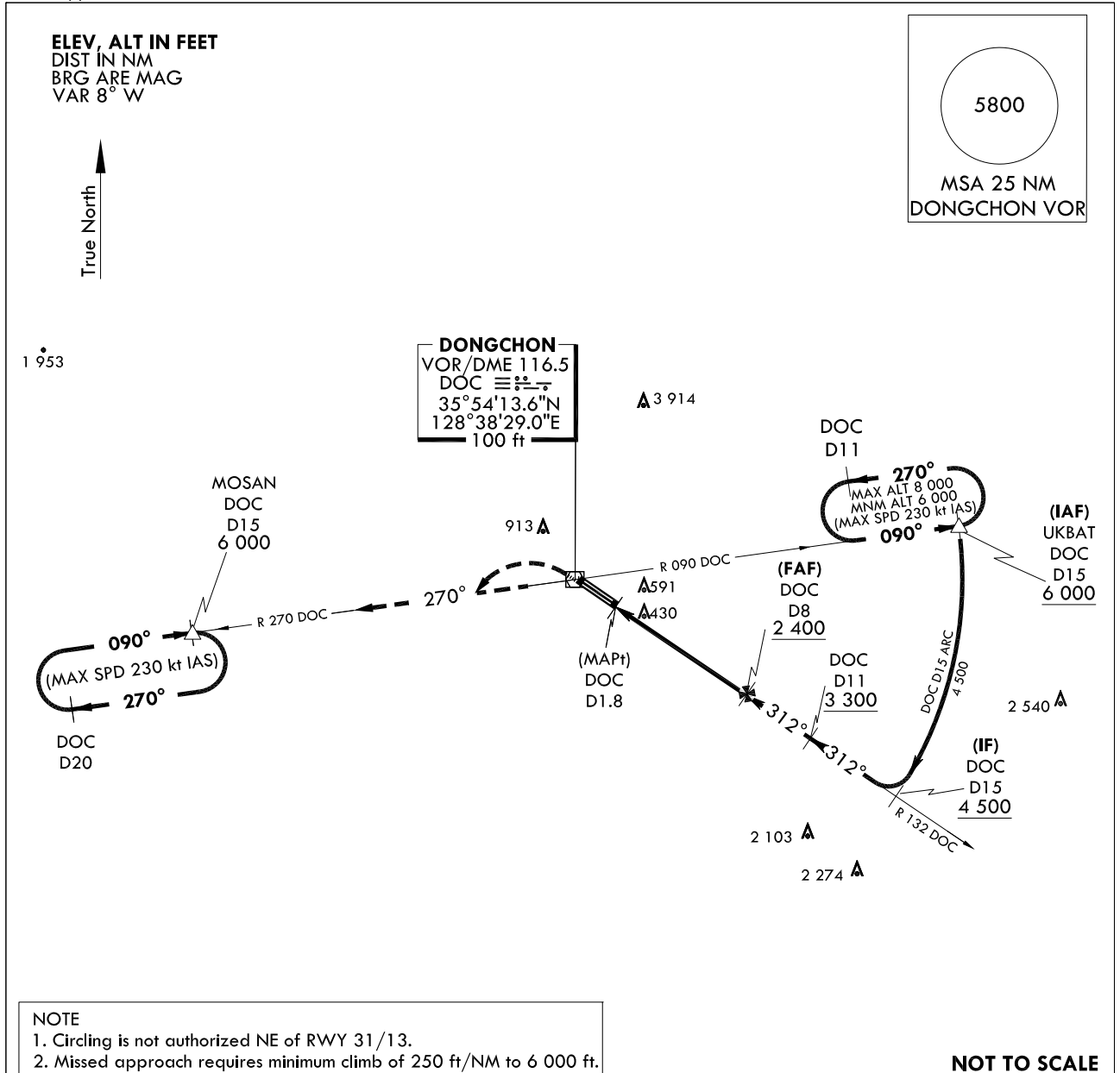
HOLDING PROCEDURE

Holding Identification	Path Descriptor	Waypoint Identifier	Fly-over	Course/Track °M(T)	Distance (NM)	Turn direction	Altitude (ft)	Speed (kt)	Coordinates	VPA/TCH	Navigation specification	Remarks
RNP RWY 31R	HM	UKBAT	-	090(081.3)	5.0	L	+8 000 -6 000	-230	35°56'16.5"N 128°56'47.1"E	-	RNAV	-

Change : Establishment of instrument approach procedure(RNP RWY 31R).

INSTRUMENT
APPROACH
CHARTAERODROME ELEV 120 ft
HEIGHTS RELATED TO
THR RWY 31R - ELEV 120 ft
HIGHEST ELEV TDZ 120 ftDAEGU APP 135.9 346.3
DAEGU TWR 126.2 236.6
365.0DAEGU/Daegu Intl(RKTN)
VOR/DME
RWY 31R

Note : Approach and circle to land under U.S. TERPS.



Change : Page control.

INTENTIONALLY

LEFT

BLANK